



Berkeley Heights Community Watch
Shining a Light on Local Government

www.bhcvw.io

Drilling Down On the Numbers Driving the Decline in Ratings and Rankings

District	2019-2020 % of Students Meeting/Exceeding	2021-2022 % of Students Meeting/Exceeding	Difference
Millburn	67	67	0
Westfield	51.6	51.3	-0.3
New Providence	54	56	2
Chatham	60.5	62	1.5
Madison	55	56	1
Summit	58.3	55	-3.3
Berkeley Heights	54.3	51	-3.3

[The Story Of The BHPSNJ Decline In 5 Photos](#)

Follow up to the 05/11/2023 BOE Meeting and Request by Dr. Foregger and Ms. Khanna that the Superintendent Address the Public's Concerns....[Read More](#)

School	Overall Avg. Decline Between 2019-2020 and 2021-2022
New Providence	-1.03
Millburn	-0.07
Westfield	-0.37
Newark	-0.47
Chatham	-0.29
Madison	-0.30
Berkeley Heights	-1.33

[Five More Snapshots of the BHPSNJ Decline](#)

Comparisons to the other Six Schools in Our Area[Read More](#)

School	2019-2020 % of Students Meeting/Exceeding	2021-2022 % of Students Meeting/Exceeding	Difference
Overland	81.3	81.7	0.4
SH K-8 Avg	81.3	71.6	-9.7
GL	73.4	47.6	-25.8

[What About The Mountainside Kids?](#)

Comparison of Mountainside, Berkeley Heights and what Happens At Governor Livingston....[Read More](#)

Exploring Possible Reasons for the Decline



Putting It All Together - Rankings, Ratings, Proficiency and Budget

Exploring a connection between proficiency, rankings and budget...[Read More](#)



Reassignments, Resignations and the Berkeley Heights Public School District's Decline

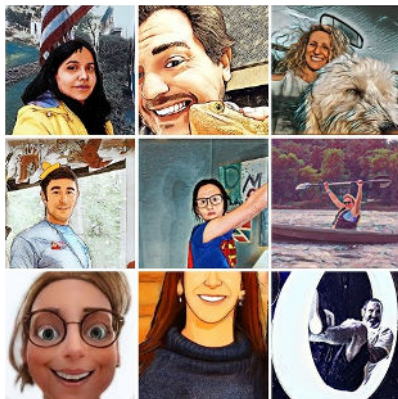
The First of Several Emails I will be sending to the Berkeley Heights Board of Education Exploring the Reasons For the Decline and How to Reverse It ...[Read More](#)



Varley: Building a Legacy of Division and Decline

The Last Four Years Have Been Tragic for Berkeley Heights....[Read More](#)

BHCW is Two Years Old!



Two Years Of Shining A Light-2023

What we've accomplished this year...[Read More](#)

This Week on YouTube

Lastly, during the last BOE Meeting, the Superintendent informed the Public that CMS was doing well on Algebra 1. CMS Dropped 15 percentage points on Algebra 1.

Algebra I	2018-2019 % of Students Meeting/Exceeding	2021-2022 % of Students Meeting/Exceeding	Difference
School			
CMS	79	64	-15

Substack Notes for the Week

[Dr. Varley's Record at Florham Park](#)

[BH Climate Indicators Compared to Other Districts](#)

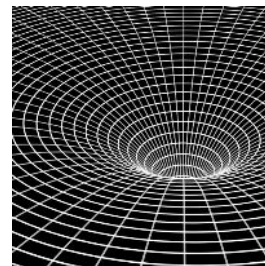
Top Three Articles in April



[Parent Concerns About Budget, Survey And OPRA Violations](#)



[NJ Education Report Publishes New Information On BHPSNJ Budget.....And It Doesn't Look Good](#)



[Our District Is In Trouble & It's Up To Our Community To Fix It](#)

